

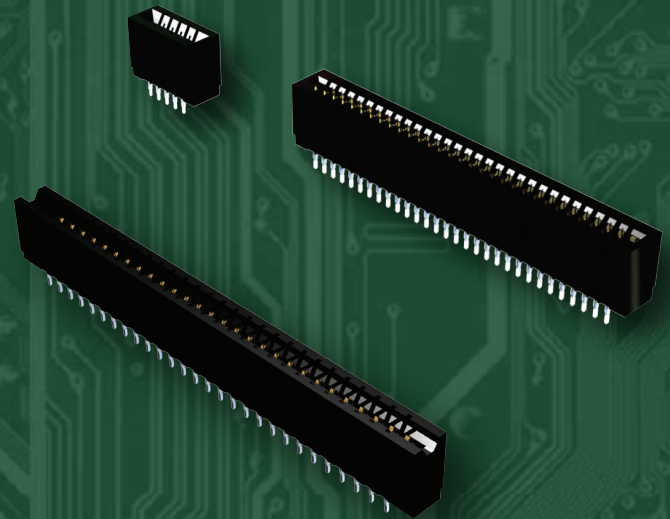


# Pressfit Card Edge Connectors

EDAC offers a very broad range of press-fit card edge connectors. Our Edgefit product utilizes a contact design that allows for ease of assembly into the PCB with the use of simple flat rock tooling. Once installed, this solderless connection provides superior shock and vibration resistance while also providing significant labour savings.

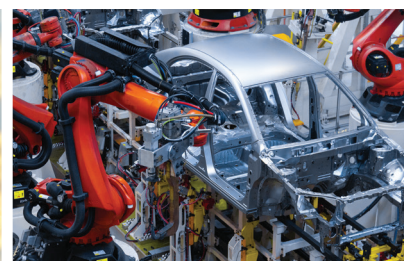
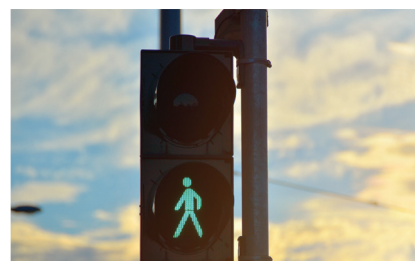
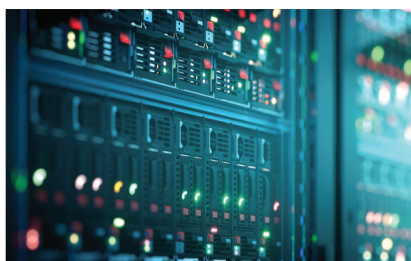
## Features

- 0.100" (2.54mm) to 0.156" (3.96mm) contact spacing
- Single or dual row up to 150 contacts
- Press fit compliant section for gas tight connection and solderless operations
- Accepts between and in contact polarizing keys
- Low profile or high profile body available
- Contact termination options include PC tail or wire wrap
- Tools available for installation, contact removal, flat rock press to board



# EDAC

[www.edac.net](http://www.edac.net)



## Pressfit Card Edge Connectors

Series	Contact Pitch	Row Spacing	No. of Contacts	High Temp. Insulator	Contact Options	Mounting Options	Polarization
725 Low Profile	0.100" (2.54 mm)	0.200" (5.08 mm)	05-150	Yes	7	1	Yes
745 High Profile	0.100" (2.54 mm)	0.200" (5.08 mm)	05-150	Yes	7	2	Yes
726 Low Profile	0.125" (3.18 mm)	0.250" (6.35 mm)	05-120	Yes	7	1	Yes
746 High Profile	0.125" (3.18 mm)	0.250" (6.35 mm)	05-120	Yes	7	2	Yes
717 Low Profile	0.156" (3.96 mm)	0.200" (5.08 mm)	05-86	Yes	7	1	Yes
737 High Profile	0.156" (3.96 mm)	0.200" (5.08 mm)	05-86	Yes	7	2	Yes

Rugged Board to Board Connections

High Reliability Backplane Interconnect solution

