

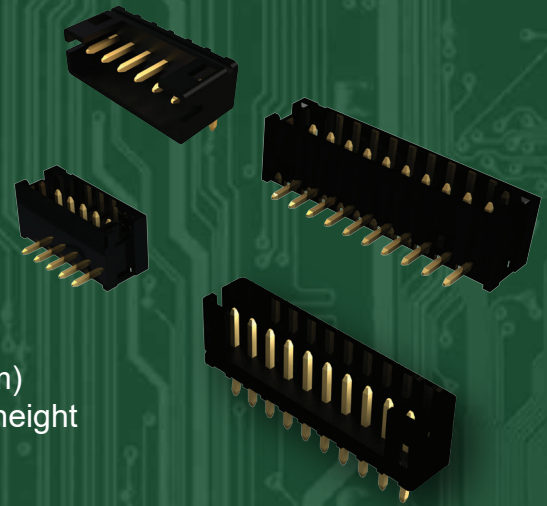


Wire to Wire & Wire to Board Connectors

The EDAC E-WTB wire to board connectors provide a reliable and economical connection. These shrouded headers are available in a variety of positions. Right angle, vertical, SMT or through hole mounted to the PCB, these connectors are ideal for use in wire harness applications and can be customized to meet your design parameters. Compatible with leading industry connectors as drop in replacements.

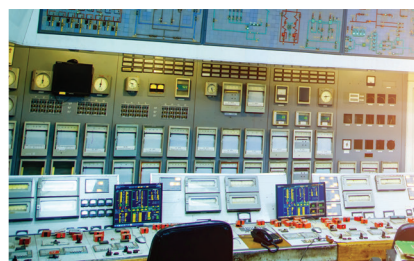
Features

- 0.079" (2.00mm) contact spacing
- For use with PC board thickness: 0.047" (1.2mm) to 0.062" (1.6mm)
- Low profile insulator body: 0.185" (4.7mm) width, 0.240" (6.10mm) height
- Contact termination options include: P.C. tail and surface mount
- Top entry or side entry configurations
- Designed for high-density connection of internal wires to PCB



EDAC

www.edac.net





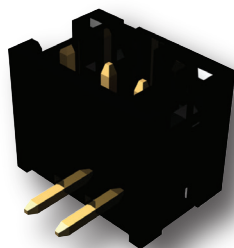
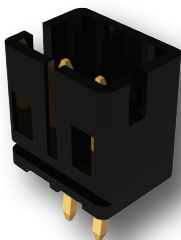
Wire to Wire & Wire to Board Connectors

Series	No. of Contacts	Latching	Current Rating	Top or Side Entry	Through Hole or SMT
140	2-16	Yes	2 amps	Both Available	Both Available



Economical wire to board interconnect solution with E-WTB shrouded headers

Easily customized to meet all design parameters



For More Information
www.edac.net

