



D-SUB CONNECTORS

EDAC

www.edac.net



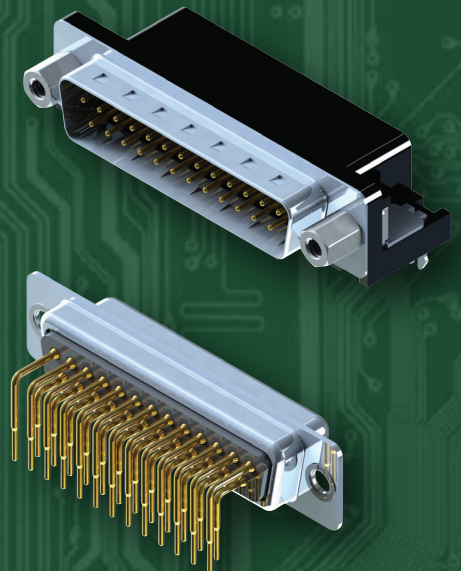


D-Sub Connectors

In the D-Mate family, EDAC offers an extensive range of industry standard D-Subminiature connectors. Available in standard density with 9, 15, 25, 37, and 50 contacts or high density versions with 15, 26, 44, 62 and 78 contacts. Vertical and right angle orientations, along with a variety of termination, plating and mounting options are available. They're also available in a stacked version.

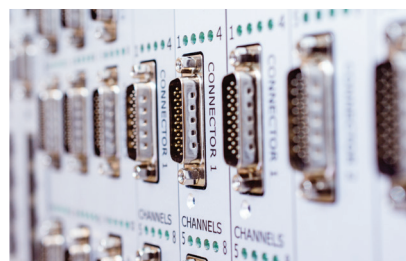
Features

- Various industry standard footprints available in low or high density
- Plugs and receptacles in 9, 15, 25, 26, 44, 62 or 78 contact sizes
- Pin and socket contact mating design with P.C. tail termination
- Right angle and vertical orientations
- Metal shell provides EMI/RFI shielding, plug shell indents provide grounding and additional mating retention
- Board mounting features include threaded hole, two or four prong board locks for exceptional retention to P.C. board
- Flange mounting options for panel mount or connector mating include through hole, threaded holes and threaded standoffs with M3 or #4-40 UNC
- Metal or plastic body is available
- High temp options available



EDAC

www.edac.net



D-Sub Connectors

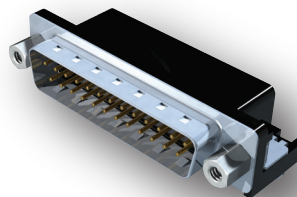
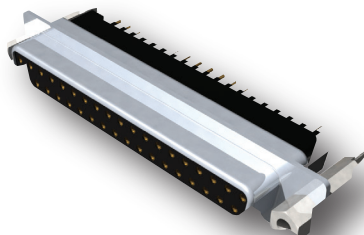
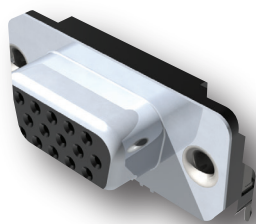
Series M/F	No. of Contacts	Plating Options	No. of Contact Codes & Density	High Temp. Insulator	Mounting Options	Flange Mtg. Options
621/622	9-37	Flash- 30u" gold	2 Std.	Yes	4	6
623/624	9-25	Flash- 30u" gold	1 Std.	Yes	2	4
625/626	9-37	Flash- 30u" gold	1 Std.	Yes	3	5
627/628*	9-50	Flash- 30u" gold	5 Std.	Yes	6	7
629/630	9-37	Flash- 30u" gold	1 Std.	Yes	3	4
632 (F)	15	Flash- 30u" gold	2 High	Yes	1	4
633/634	15-78	Flash- 30u" gold	2 High	Yes	4	5
637/638	15-78	Flash- 30u" gold	3 High	Yes	3	7
661-664	9-37	Flash- 30u" gold	1 Std.	Yes	4	4

* Available with plastic or metal body



Widest range of options available to meet all design requirements

Industry standard foot prints for drop in replacements



EDAC

For More Information
www.edac.net



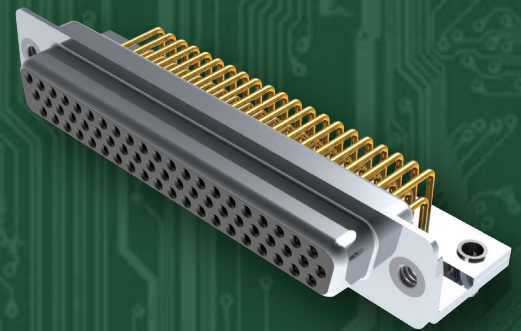


Machined D-Sub Connectors

The EDAC D-PIN family of D-Subminiature connectors are manufactured using precision machined contacts available from 9 to 62 positions. Standard and high density, with vertical and right angle body styles available. A number of mounting and contact plating options are available. The 5 amp current rating along with a wide operating temperature range provides for use in rugged environments.

Features

- 5 amp precision machined contacts
- Plug and receptacles in 9, 15, 25, 26, 37, 44, 50 and 62 positions
- Pin and socket contact mating design with P.C. tail termination
- Mounting options for panel mount or connector mating include through hole, threaded inserts, 4 prong board locks and removable threaded standoffs
- Wide operating temperature of -55°C to +125°C



EDAC

www.edac.net

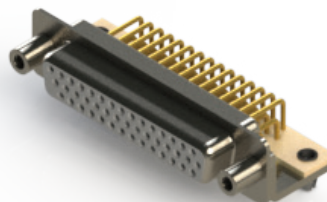
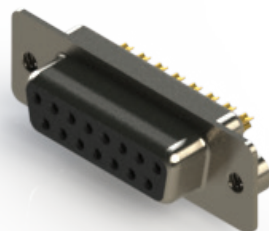
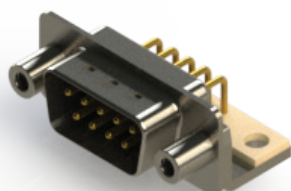


Machined D-Sub Connectors

Series M/F	No. of Contacts	Plating	No. of Contact Codes & Density	Ins. Color Options	Shell Plating Options	Flange Mtg. Options
621M/622M	9-50	Flash- 30u" gold	1 Std.	4	2	6
627M/628M	9-50	Flash- 30u" gold	3 Std.	4	2	6
629M/630M	9-50	Flash- 30u" gold	1 Std.	4	2	6
633M/634M	15-62	Flash- 30u" gold	1 High	2	2	6
637M/638M	15-62	Flash- 30u" gold	2 High	1	2	6

Widest range of options available to meet all design requirements

Industry standard foot prints for drop in replacements



EDAC

For More Information
www.edac.net





Power Combo D-Sub Connectors

The EDAC Power-D product line is a D-Subminiature style connector combining standard signal contacts with power or coaxial contacts in the same connector. The body dimensions are similar to the standard D-sub sizes 9, 15, 25, 37 and 50 pin, and are offered in 22 different configurations. Power contacts up to 40 amps, or coaxial contacts with either 50 or 75 ohm impedance ratings are available.

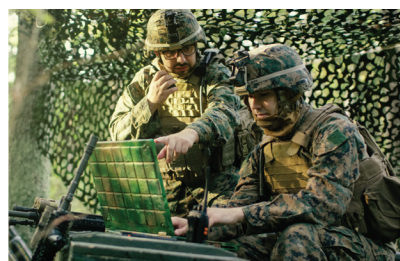
Features

- Plug and receptacles in vertical or right-angle orientations
- Data signal contacts at 5 amps & power contacts handling 10, 20, 30 or 40 amps
- Pin and socket contact mating design with P.C. tail and solder cup termination
- Metal shell provides EMI/RFI shielding while plug shell indents provide grounding and additional mating retention
- Mounting options for panel mount or connector mating include through hole, threaded hole and threaded standoffs
- D-shaped connector mating outline provides polarization



EDAC

www.edac.net

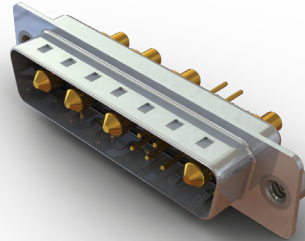
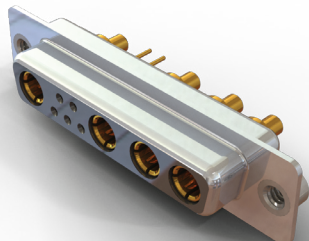
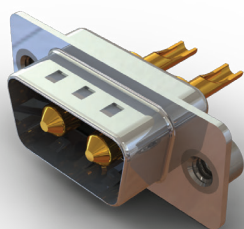


Power Combo D-Sub Connectors

Series	No. of Layout Options	Plating	Current Rating Power Contacts	Mounting Options	Impedance Rating Coaxial Contacts
627C	22	Flash-30u" gold	10 - 40 amps	11	50 or 75 ohms
628C	22	Flash-30u" gold	10 - 40 amps	11	50 or 75 ohms
629C	22	Flash-30u" gold	10 - 40 amps	11	50 or 75 ohms
630C	22	Flash-30u" gold	10 - 40 amps	11	50 or 75 ohms

Widest range of options available to meet all design requirements

Power and data signal contacts in a single package!



EDAC

For More Information
www.edac.net



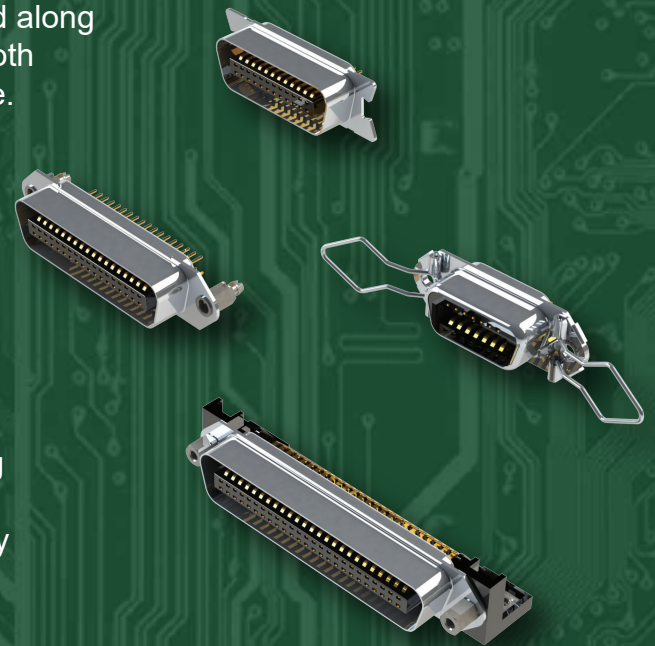


Parallel Interface D-Sub Connectors

EDAC B57 connectors are parallel port interfaces fully compatible with all industry standards. Ribbon style contacts are utilized along with board locks for superior mating and retention forces. Both board receptacle and male plug cable versions are available.

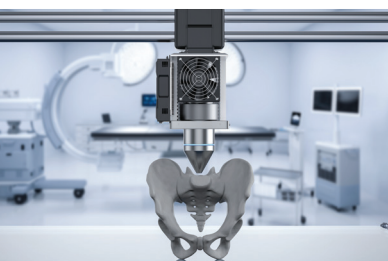
Features

- 14, 24, 36, 50 or 64 positions available
- Plating options from flash to 30u" gold
- Durable phosphor bronze contacts with 1 amp current rating
- Boardlocks for superior retention
- Male plug on cable side has IDC contacts for easy assembly



EDAC

www.edac.net





Parallel Interface D-Sub Connectors

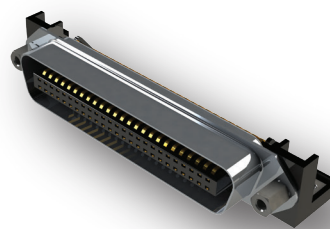
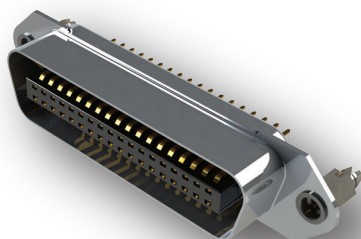
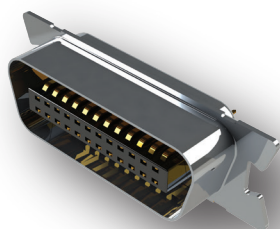
Series	No. of Contacts	Plating	No. of Contact Codes & Density	Board Mounting Options	Contact Styles
M/F					

B57	14 / 24 / 36 / 50 / 64	Flash-30u" gold	6 high	8	4-6
-----	------------------------	-----------------	--------	---	-----



High speed video signal interface

Hot pluggable with solid mating force!



EDAC

For More Information
www.edac.net





Waterproof D-Sub Connectors

The EDAC D-Seal series of IP67 rated waterproof D-Subminiature connectors are available in both standard and high density packages. Plug & receptacles in 9, 15, 25, 26 and 44 pin versions are available as well as high power combo configurations. Vertical and right angle footprints, with a variety of termination styles, contact plating thicknesses, and mounting options are available. A solid performer in ruggedized applications and harsh environments.

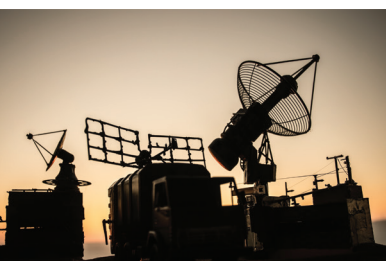
Features

- Standard and high density plug and receptacles in 9, 15, 25, 26 and 44 contact pin sizes
- Signal along with high power contacts up to 40 amps combined in one connector
- Plug shell indents provide grounding and additional mating retention
- Mounting options for panel mount or connector mating include threaded inserts and threaded standoffs
- Epoxy sealed by special process providing zero ingress, no wicking up leads and a smooth molded finish with no air bubbles. Combined with solid O-ring seal to panel
- Degree of Protection: IP67 as per IEC60529



EDAC

www.edac.net



Waterproof D-Sub Connectors

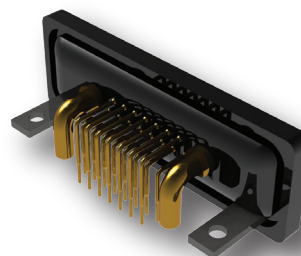
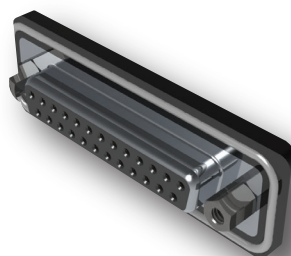
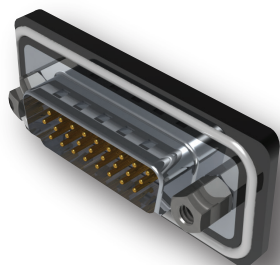
Series M/F	No. of Contacts	Plating Options	No. of Contact Codes & Density	Ins. Color Options	Shell Plating Options	Flange Mtg. Options
627W/628W	9-25	Flash- 30u" gold	4 Std.	1	1	3
629W/630W	9-25	Flash- 30u" gold	4 Std	1	1	3
633W/634W	15-44	Flash- 30u" gold	3 High	1	1	1
637W/638W	15-44	Flash-	3 High	1	1	1

Widest range of options available to meet all design requirements

Superior IP67 Waterproof solution that withstands harsh environments

Waterproof Power Combo D-Sub Connectors

Series M/F	No. of Contacts Power / Signal	Plating Options	No. of Contact Codes & Density	Ins. Color Options	Shell Plating Options	Flange Mtg. Options
627WC/628WC	1-5 / 0-20	Flash- 30u" gold	12 Std.	1	2	4
629WC/630WC	1-5 / 0-20	Flash- 30u" gold	12 Std.	1	2	6



Tel: +1 416 754 3322
customerservice@edac.net

Established in 1966, EDAC soon became a world leader in providing connectors for Card Edge and Rack & Panel applications. Since then, we have expanded our product offering to include one of the widest ranges of interconnect solutions in the world. Products include D-Sub, Modular Jacks RJ45, USB, HDMI, Inline Plug & Socket, Headers, Waterproof Connectors and Custom Solutions. Our dedicated teams of engineering, customer service, field support, and global distribution partners allow EDAC the opportunity to support many unique applications globally.

www.edac.net    

Connect with Us . . . Experience Makes the Difference